



EARTH ARCHITECTURE

Ronald Rael

Currently it is estimated that one half of the world's population—approximately three billion people on six continents—lives or works in buildings constructed of earth. And while the vast legacy of traditional and vernacular earthen construction has been widely discussed, little attention has been paid to the contemporary tradition of earth architecture. Author Ronald Rael, founder of Eartharchitecture.org provides a history of building with earth in the modern era, focusing particularly on projects constructed in the last few decades that use rammed earth, mud brick, compressed earth, cob, and several other interesting techniques.

2008 / 208 pp / 222 color images / 978-1-56898-767-5 / hc / \$45.00 / CND \$58.50

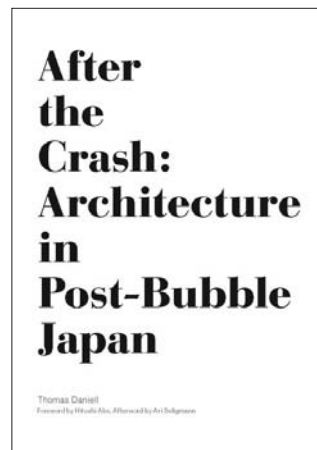


MORE MOBILE PORTABLE ARCHITECTURE FOR TODAY

Edited by Jennifer Siegal
Foreword by Jude Stewart
Introduction by William J. Mitchell

From the desert tents of the Bedouin to the silvery capsules of the Airstream trailer, mobile architecture has inspired designers with its singular characteristics of lightness, transience, and practicality. In *More Mobile*, the follow-up to her groundbreaking 2002 book *Mobile*, Jennifer Siegal explores the ever-growing possibilities of portable, demountable structures. From the serious Refuge Wear to the playful Bar Rectum and the practical Kunsthallen, *More Mobile* explores the working methods and finished work of the most exciting contemporary designers. Contributors include Studio-Orta, Dré Wapenaar, Andrea Zittel, Andrew Maynard, Andreas Vogler, MMW, LOT-EK, and others.

2008 / 144 pp / 220 color ill. / 978-1-56898-758-3 / pb / \$24.95 / CND \$32.50

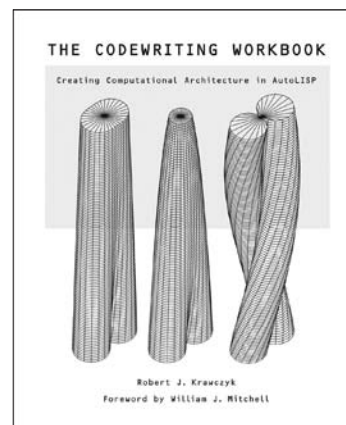


AFTER THE CRASH ARCHITECTURE IN POST-BUBBLE JAPAN

Thomas Daniell

In the late 1980s, Japan was awash in seemingly unlimited wealth and rising toward what would be the peak of its modern economic success, power, and influence. In 1991 the same lethal combination of risky loans, inflated stocks, and real estate speculation that created this “bubble economy” caused it to burst, plunging the country into its worst recession since World War II. New Zealand-born architect Thomas Daniell arrived in Japan at the dawn of this turbulent decade. *After the Crash* is an anthology of essays that draw on firsthand observations of the built environment and architectural culture that emerged from the economically sober post-bubble period of the 1990s.

2008 / 192 pp / 100 b/w ill. / 978-1-56898-776-7 / pb / \$24.95 / CND \$32.50



THE CODEWRITING WORKBOOK CREATING COMPUTATIONAL ARCHITECTURE IN AUTOLISP

Robert J. Krawczyk
Foreword by William J. Mitchell

The Codewriting Workbook introduces students and practitioners to basic programming concepts for computer-aided design (CAD). Through a series of guided exercises and examples, readers learn how to develop and write procedures for creating two-dimensional drawings and three-dimensional models using a variety of algorithmic functions. Each exercise begins with a simple concept and evolves into a family of possible solutions. A primer on programming, *The Codewriting Workbook* presents efficient methods for computing singular results that, when compounded, generate the broadest range of design possibilities.

2008 / 400 pp / 274 b/w ill. / 978-1-56898-792-7 / pb / \$50.00 / CND \$65.00





SOURCE BOOK OF AMERICAN ARCHITECTURE

G.E. Kidder Smith

This comprehensive and insightful illustrated survey of 500 of America's most distinguished buildings provides a unique overview of the thousand-year architectural development of the United States. It examines our nation's architecture from its earliest days to the present, ranging from cliff dwellings in Mesa Verde to Frank Lloyd Wright's Robie House in Chicago to James Ingo Freed's Holocaust Museum in Washington. Indispensable in any library, it also serves as a general introduction to American architecture or as a splendid guide for tourists.

2000 / 688 pp / 557 b+w ill. / 978-1-56898-254-0 / pb / \$29.95 / CND \$38.95

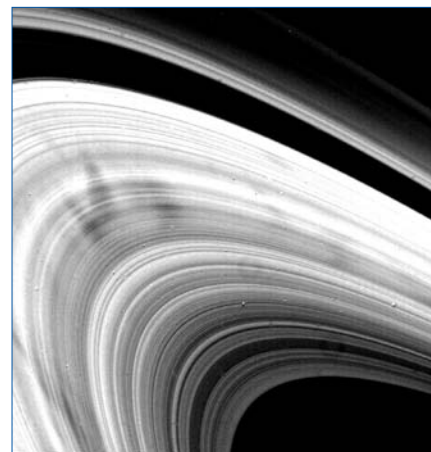


BUILDING IN THE FUTURE RECASTING LABOR IN ARCHITECTURE

Edited by Phillip Bernstein and
Peggy Deamer
Preface by Robert A.M. Stern
Introduction by Andrew Ross
Postscript by Moshen Mostafavi

Through observations, arguments, and detailed project explorations these diverse contributors describe new models of practice and reorganizations of labor for the 21st century. Chapters include a reconsideration of craft in light of digital fabrication; an exploration of new methods of collaboration; an analysis of changes in contracts and standards; and an assessment of the new market realities of mass production and customization.

2008 / 240 pp / 200 color ill.; 55 b/w ill. / 978-1-56898-806-1 / pb / \$49.50 / CND \$64.95

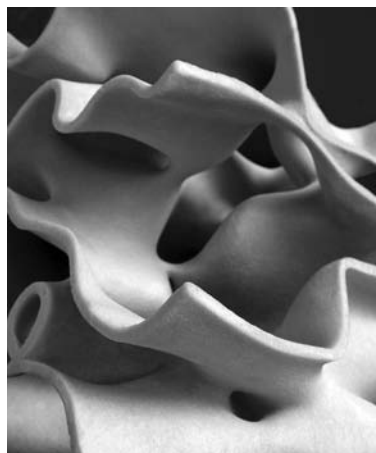


306090 12: DIMENSION

Edited by Emily Abruzzo
and Eric Ellingsen and
Jonathan D. Solomon

306090 has emerged as an essential forum for issues of architectural practice and theory. Each volume addresses a pressing issue and offers diverse, cross-disciplinary solutions in the form of projects, ideas, buildings, and other media. *Dimension* (306090 12) reconsiders the act of measurement and definition in architectural design practice. Architecture in the past two decades has been transformed by the ongoing revolution in digital design and fabrication techniques. *Dimension* explores how the data, design, and invention derived from the act of measurement can help architects respond to economic, political, and environmental factors.

2008 / 192 pp / 100 color & 75 b/w images / 978-0-61518-202-5 / hc / \$24.95 / CND \$32.50



306090 11: MODELS

Emily Abruzzo, Eric Ellingsen,
Jonathan D. Solomon

Models, the eleventh volume in the *306090* series, explores the role of the architectural model today in relation to the idea, the diagram, the technique, and the material. *Models* includes contributions from engineers, scientists, poets, painters, photographers, historians, urbanists, and architects both young and experienced.

2007 / 240 pp / 75 color / 100 b+w / 978-1-56898-734-7 / pb / \$24.95

